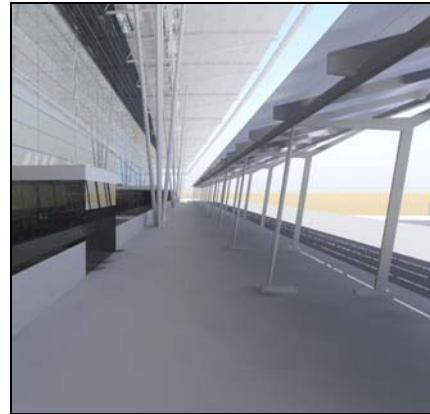
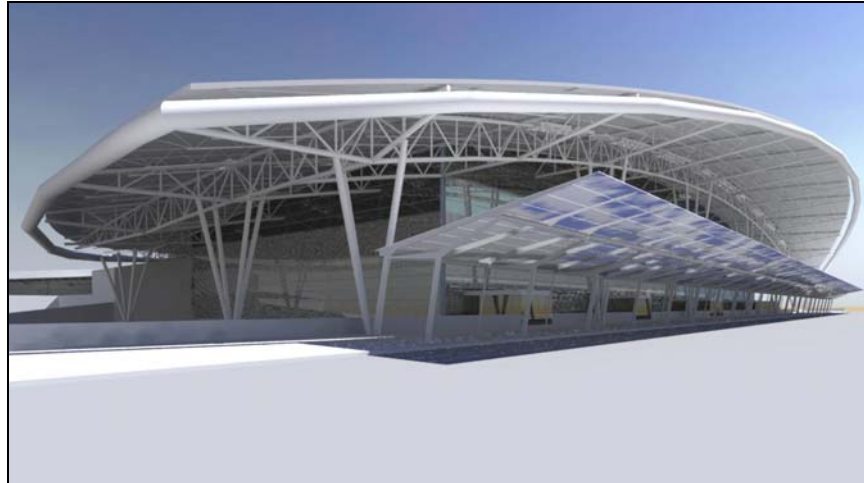


**ARCHITECTURAL ENERGY
CORPORATION**
Integrated Engineered Solutions

Indianapolis International Airport Mid-Field Terminal

Indianapolis, Indiana



Corporate Offices:
2540 Frontier Avenue, Suite 201
Boulder, Colorado 80301
303 444 4149 Telephone
303 444 4304 Fax

San Francisco Office:
142 Minna Street
San Francisco, California 94105
415 957 1977 Telephone
415 957 1381 Fax

Chicago Office:
955 North Lively Boulevard
Wood Dale, Illinois 60191
630 860 1439 Telephone
630 860 1442 Fax

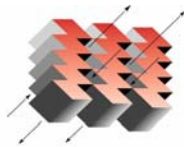
Southeast Regional Office:
2354 Wimbledon Circle
Franklin, Tennessee 37069
615 599 5368 Telephone
303 444 4304 Fax

A new Mid-Field Terminal is under design for the Indianapolis International Airport. Located in the middle of the airport runways, the new terminal consists of a large Departure Hall, Security Halls, two concourses, Arrival Hall, and a large interior Civic Plaza. The proposed design is a reflection of the sustainable, high performance design objectives established by the Airport Authority. An aggressive daylighting design strategy is employed throughout the Terminal and Concourses, with linear daylighting used in the Departure Hall and Security Halls; side-daylighting strategies used in the Departure Hall and the concourses, and a large circular skylight above the Civic Plaza.

Architectural Energy Corporation is serving as the energy, daylighting and sustainable design consultant and LEED® Certification consultant to AeroDesign Group – HOK Design Team. Detailed energy, daylighting and airflow modeling is being undertaken to assist the Design Team make informed decisions on energy and environmental design alternatives.

Project Information: Indianapolis International Airport Mid-Field Terminal

Project Type	Airport Terminal and Concourses
Client / Design Team	<i>Architect:</i> AeroDesign Group Hellmuth, Obata + Kassabaum, Inc. <i>Energy/Daylighting/Sustainable Design/ LEED Consultant:</i> Architectural Energy Corporation Boulder, Colorado
Size	1.2 million ft ²
Location	Indianapolis, Indiana
Cost	\$300 million
Year Constructed / Occupied	Currently under design
Sustainable Design Features	<p>A whole-building integrated sustainable design process has been used to identify, evaluate, select and incorporate energy efficiency and sustainable design strategies. The primary sustainable design concepts integrated into the terminal and concourse design are as follows:</p> <ul style="list-style-type: none">▪ High performance envelope including increased insulation levels, and high performance glazing “tuned” by function and orientation.▪ Aggressive daylighting of all Terminal and Concourse spaces, with daylight dimming controls on the electric lighting.▪ High efficiency electric lighting system throughout with dimming controls in daylit zones.▪ High efficiency mechanical systems throughout with displacement air distribution and a radiant floor system in the Civic Plaza.▪ Low environmental impact materials used throughout for all primary and secondary systems, and interior finishes.



ARCHITECTURAL ENERGY
CORPORATION
Integrated Engineered Solutions